

CARGO ACCESS ROAD IMPACTS

Imperial Private Pavement Rehabilitation Project Phase 1

Tuesday, February 20 through Thursday, February 22: Daily from 4AM to 1:30PM (9.5 hour closures)
 Saturday, February 24 at 12AM continuous to Sunday, February 25 at 6AM (30 hour closure)

ACTIVITY

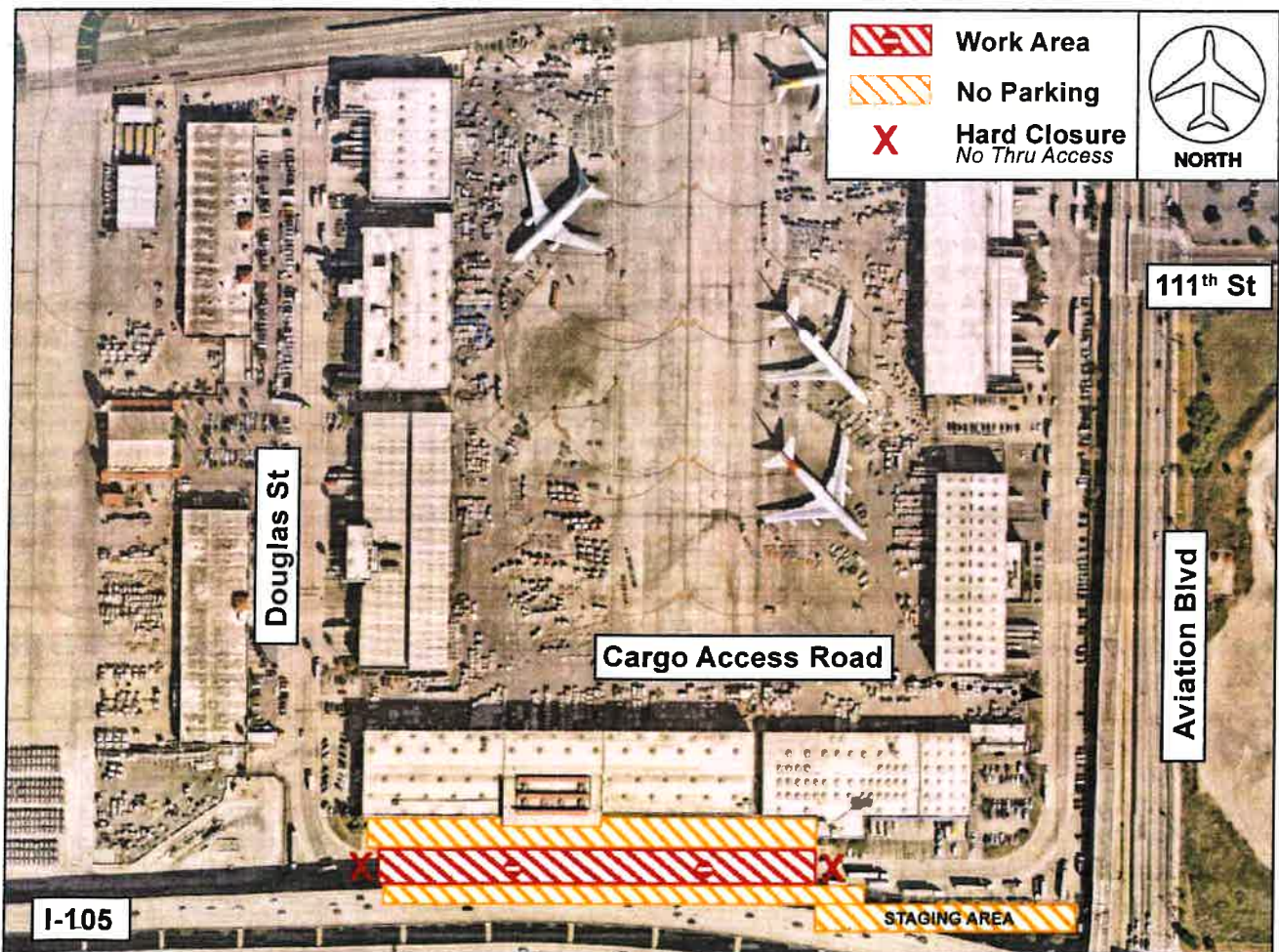
To facilitate Phase 1 of the Imperial Private Pavement Rehabilitation Project, a portion of the Cargo Access Road, illustrated below, will be closed per the following schedule:

- Tue 2/20: Closed 4AM to 1:30PM (profile & clean)
- Wed 2/21: Closed 4AM to 1:30PM (profile & clean)
- Thu 2/22: Closed 4AM to 1:30PM (profile & clean)
- Sat 2/24 at 12AM to Sun 2/25 at 6AM: Closed 30 consecutive hours (roadway paving)

No parking will be allowed in adjacent areas, illustrated below, including no access to loading docks during work hours. No parking signage will be installed; all vehicles parked in these areas must be moved by midnight prior to work start. Additional parking will be available on a first come first serve basis in the ICC hang tag parking area.

Please note: Crews will be mobilizing heavy equipment to their staging area adjacent to the work area prior to work start. Always use caution when traveling near construction zones.

For questions please contact Laronda Echols at 424-646-7207 (D) -OR- 424-356-7978 (C), or the ARCC at 424-646-5292.



LAX Construction Hotline: 310-649-5292 | [@FlyLAXAirport](https://twitter.com/FlyLAXAirport) | [LAXInternationalAirport](https://www.lax-airport.com)
LAXConstructionHotline@LAWA.org

C.A.L.M.

Coordination and Logistics Management Team